

## FABER



**Professional mini boiler with iron, with manual refill with water level gauge.**

---

**Product code: 1230**

### **DESCRIZIONE:**

Professional mini boiler with iron, with manual refill, for 5 hours of nonstop operation.

### **Professional**

800 W steam electric iron, professional grade. The boiler provides approximately 5 hrs of non-stop operation.

**Precise**

The temperature of steam is precisely controlled by means of pressure switches. The amount of steam to the iron can be adjusted.

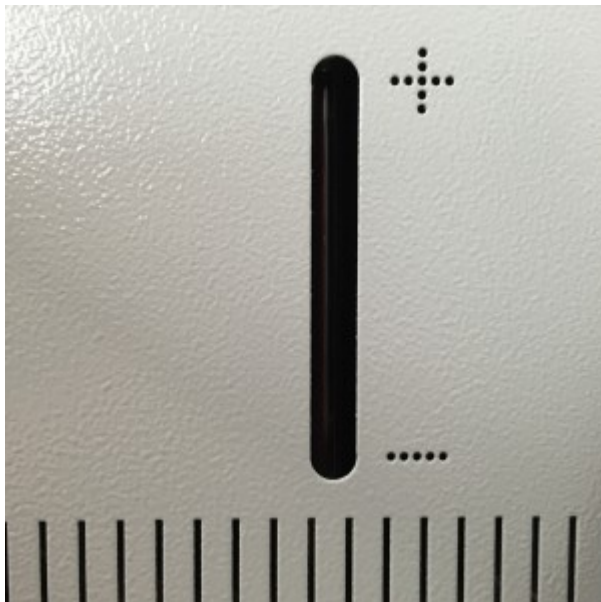
**Extremely safe**

The boiler is equipped with a double thermostat protection and safety valve. The iron is protected by a thermal fuse to prevent overheating. Stainless steel boiler and stainless heating elements provide lifelong operation in total safety.

**Inexpensive operation**

The boiler runs on regular tap water (not softened). Self-cleaning heating elements are not damaged by limescale and require little maintenance in time. The whole appliance only requires 2200 W.

|

**MAIN FEATURES**

**Water level gauge**



**Pressure gauge**



**Cable holder rod**



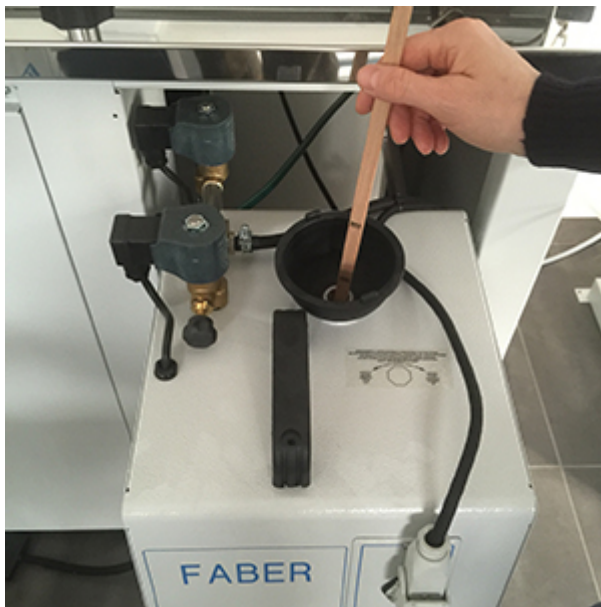
**Built-in refill funnel**



**Carrying handle**



**Refill tank included**



**Water level measuring stick**

## **OPTIONS**



**Stand on casters**



**Optional PTFE shoe to avoid shine**

## TECHNICAL SPECIFICATIONS

1230

<b>Description</b>	Professional mini boiler with iron and water level gauge
	230V 50Hz
<b>Electrical requirements</b>	220V 60Hz
	110V 60Hz
<b>Total power</b>	2,2 kW
<b>Iron resistance</b>	0,8 kW
<b>Boiler resistance</b>	1,4 kW
<b>Boiler volume</b>	5 l
<b>Steam pressure</b>	3 bar
	43 PSI
<b>Steam production</b>	1,96 kg/h
	4,3 lbs/h
<b>Autonomy</b>	5 h
<b>Dimensions</b>	500 x 310 x 500 mm
	20" x 12" x 20"
<b>Net weight</b>	14,5 kg
	32 lbs